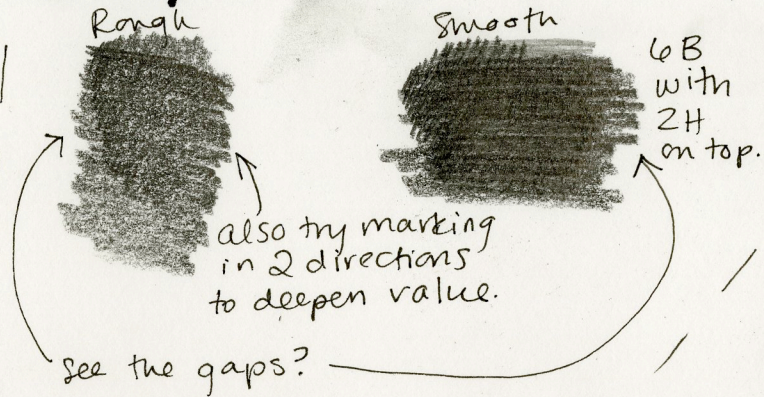
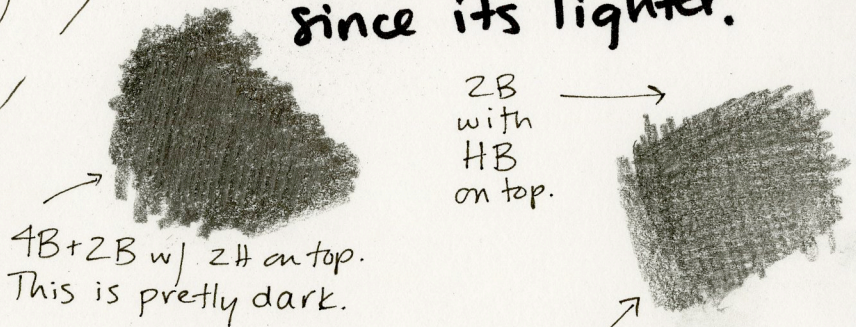


Tips to help you create values in your different scales:

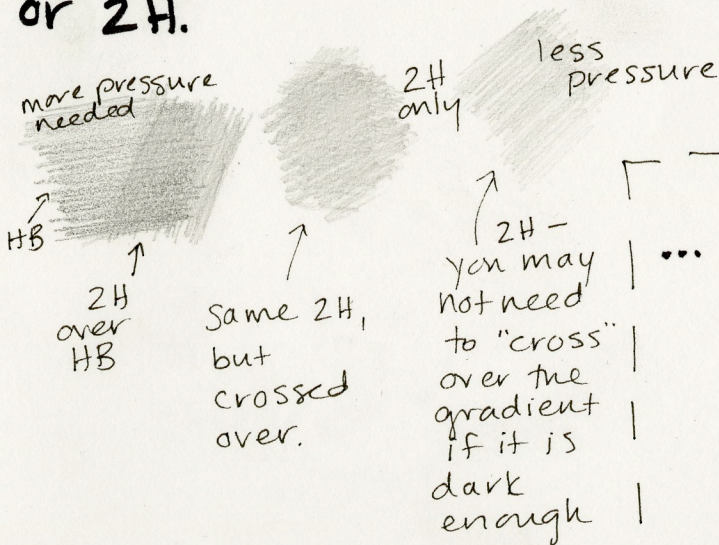
For dark values (values 10, 9, 8) use 6B. Add HB or 2H on top to help smooth out the tone.



For medium values, #7, 6, 5, try using a combo of 4B, 2B with 2H or HB on top. Use more 4B for #7 since it's darker and maybe only 2B for #5 since it's lighter.



For medium light values #4, #3 try using only HB and/or 2H.



Lightest values

#2 & #1

... barely a whisper. Use 2H.

To get lighter values use less pressure when applying the pencil

↑ in fact, these may be so light that they don't print on this example...

* Work light to dark. Slowly layer the pencil gradations. It is easier to add than it is to erase. Try to make the transitions gradual.

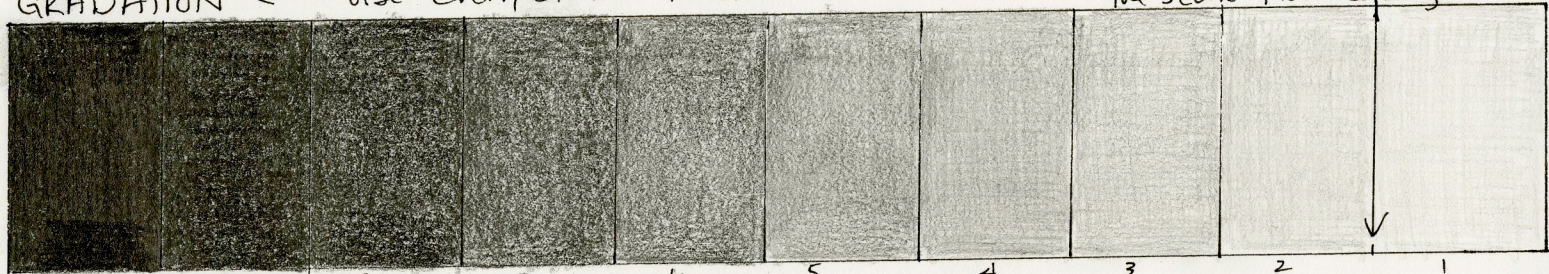
** Try working from the outer edges, working your way into the middle values. For example, start w/ your darkest value #10, then the lightest #1. Then try #9, then #2. Go a step darker/lighter each time.

Value Scales

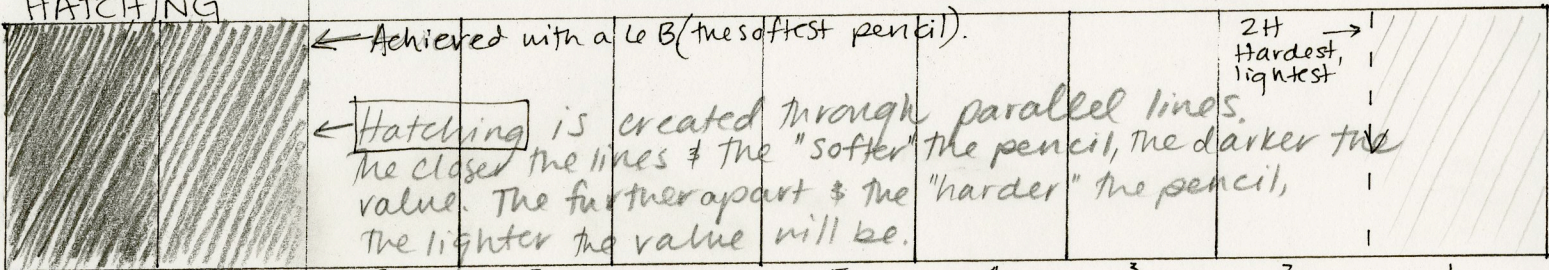
What is a value?

GRADATION ← use even, blended tones for this scale!

aim for even transitions.
If you squint your eyes, does the scale flow easily?



HATCHING

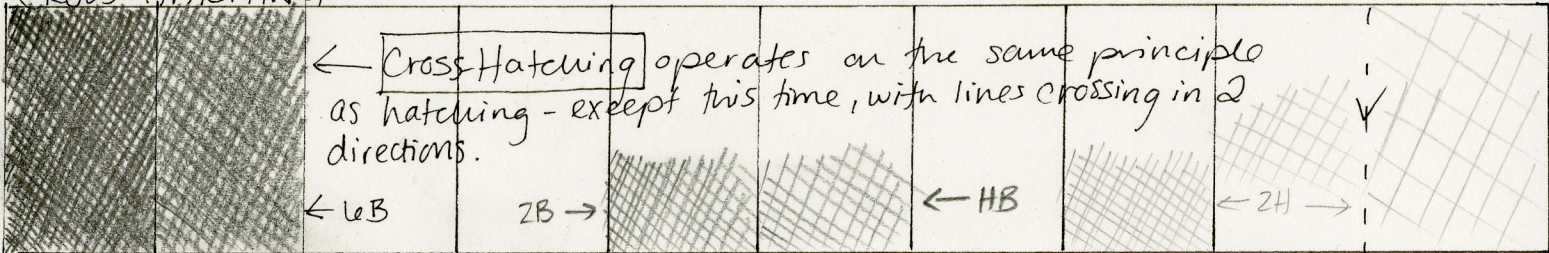


← Achieved with a 6B (the softest pencil).

← Hatching is created through parallel lines. The closer the lines & the "softer" the pencil, the darker the value. The further apart & the "harder" the pencil, the lighter the value will be.

2H → Hardest, lightest

CROSS HATCHING



← Cross Hatching operates on the same principle as hatching - except this time, with lines crossing in 2 directions.

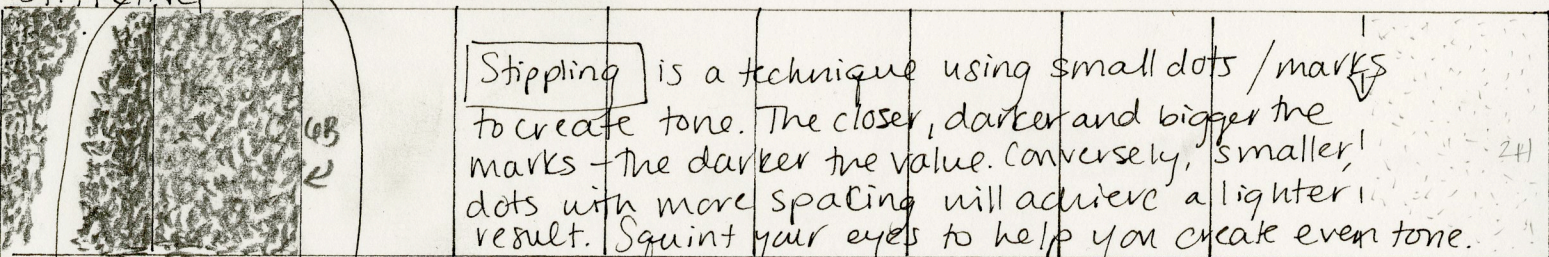
← 6B

2B →

← HB

← 2H →

STIPPLING

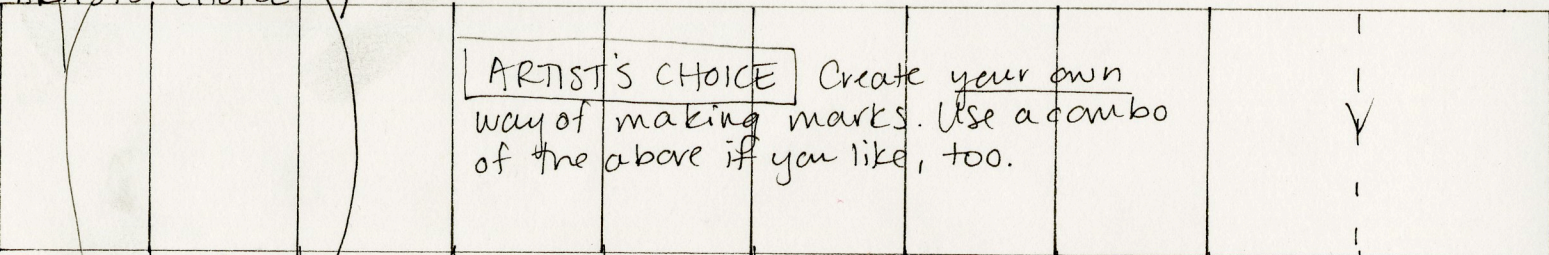


Stippling is a technique using small dots / marks to create tone. The closer, darker and bigger the marks - the darker the value. Conversely, smaller dots with more spacing will achieve a lighter result. Squint your eyes to help you create even tone.

6B

2H

ARTIST'S CHOICE



ARTIST'S CHOICE Create your own way of making marks. Use a combo of the above if you like, too.

be sure to skip spaces

→ Avoid this mistake! This is why it's important to do this in HB pencil!

TYPES OF PENCILS:

- B** • Soft, Dark. 8B is darker & softer than 2B.
- HB** • In the middle
- H** • Hard, Light, Sharp. 6H is lighter & harder than 2H.

Use an obvious set of notations to help you grid each rectangle