

Design a dichotomous key to help another group identify these members of the order Coleoptera (beetles)



Leptinotarsa decemlineata
Colorado beetle



Leptinotarsa juncta
False potato beetle



Anthonomus grandis
Boll weevil



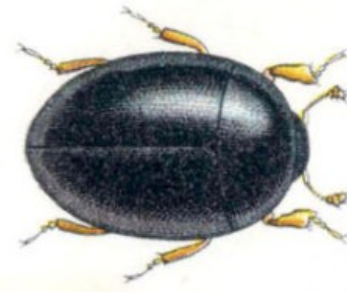
Sitophilus granarius
Wheat weevil



Coccinella septempunctata
Seven-spot ladybird



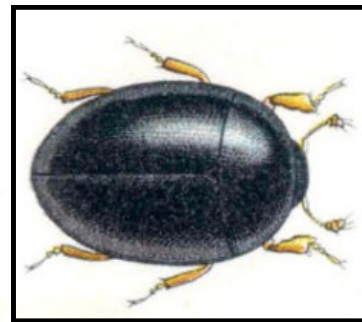
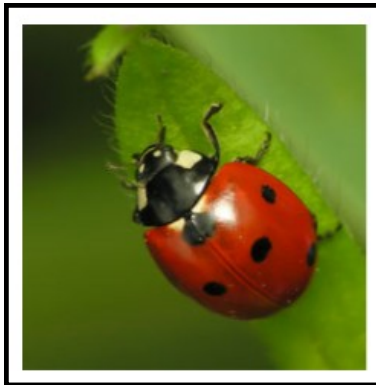
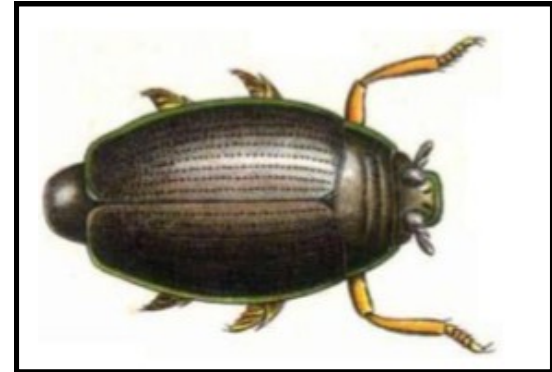
Trogodendron fasciculatum
Clerid beetle



Sphaerius acaroides
Freshwater beetle



Gyrinus natator
Whirligig beetle



Anthonomus grandis
Boll weevil

Leptinotarsa juncta
False potato beetle

Coccinella septempunctata
Seven-spot ladybird

Trogodendron fasciculatum
Clerid beetle

Leptinotarsa decemlineata
Colorado beetle

Sitophilus granarius
Wheat weevil

Sphaerius acaroides
Freshwater beetle

Gyrinus natator
Whirligig beetle

Check your understanding

1. Which two species are most closely related? How do you know?
2. What might an individual of the species *Coccinella 11-punctata* look like?

Find out more about ladybirds here:

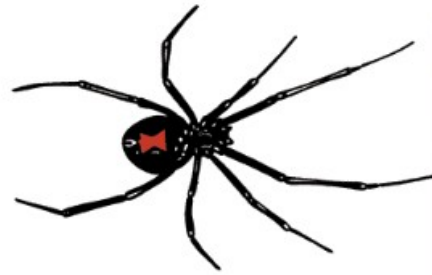
http://www.ladybird-survey.org/species_desc.aspx?species=6455%2059602

Design a dichotomous key to help another group identify these members of the order Araneae (spiders)



Brown recluse

Loxosceles reclusa



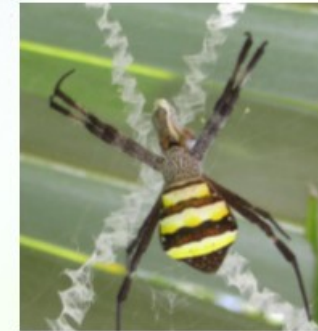
Black widow

Latrodectus tredecimguttatus



Hobo spider

Tegenaria agrestis



St. Andrew's Cross

Argiope keyserlingi



FEMALE



MALE

Mouse spider

Missulena bradleyi



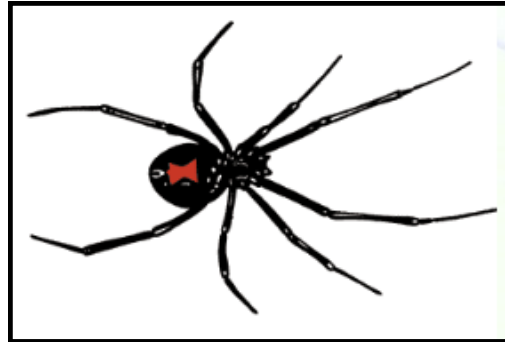
Wolf spider

Hogna carolinensis



Huntsman

Heteropoda maxima



Wolf spider
Hogna carolinensis



Brown recluse
Loxosceles reclusa

Black widow
Latrodectus tredecimguttatus

Hobo spider
Tegenaria agrestis

St. Andrew's Cross
Argiope keyserlingi

Huntsman
Heteropoda maxima

Mouse spider (male)
Missulena bradleyi

Mouse spider (female)
Missulena bradleyi

Check your understanding

1. All of these spiders are members of the same (circle correct answers):
Domain, kingdom, phylum, class, order, family, genus, species
2. What might an individual of the species *Argiope appensa* look like?